

# EL-IOT-1

Ambient Temperature | Wifi Cloud-Connected Data Logger



Your data, anytime, anywhere

- Our lowest cost WiFi temperature data logger
- Measurement range -20 to +60°C
- Uploads data to the EasyLog Cloud
- Status indicators and sounder
- Set up your own alarms and notifications
- Typical battery life over 1 year, or can be permanently powered

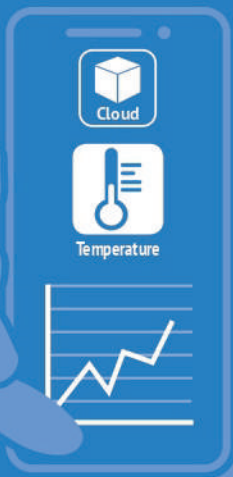


The EL-IOT is simple to set up and once configured the device can be placed anywhere within range of your WiFi network, continually monitoring and recording your data to the EasyLog Cloud. You can then use the Cloud to access, analyse and share your data from any internet-connected device worldwide.

The EL-IOT can be set with high and low alarms. If one of your parameters is breached, an instant alarm is activated. Alarm options include email alerts (which can be sent to one or multiple email addresses),

SMS messages, and indicator and sounder alerts on the device. Audit marks can be created in the data at the touch of a button.

The device can be powered using the batteries supplied or with a mains adapter (sold separately), and is provided with a wall mountable bracket for easy installation.



## SPECIFICATIONS



Temperature Range	-20 to +60°C (-4 to +140°F)
Temperature Resolution	0.1°
Temperature Accuracy	±0.5°C (±0.9°F)
Logging Period	10 seconds to 12 hours (user selectable)
Transmission Interval	1 minute to 24 hours (user selectable)
Internal Memory	300,000 readings
Battery Life	>1 year typical
Battery Type	4 x AA 1.5V batteries (or via mains adapter)
Dimensions	94 x 83 x 31mm
Operating Temperature Range of Logger	-18 to +55°C (0 to +131°F) (batteries) -20 to +60°C (-4 to +140°F) (power supply)
Environmental Rating	IP54 (splash proof)



EasyLog

Your data, anytime, anywhere

# EL-IOT-1

## Ambient Temperature | Wifi Cloud-Connected Data Logger

# EasyLog Cloud Your data, anytime, anywhere.



Easily access your most important data, anywhere



Automatic email alerts and SMS



Connect data loggers from multiple sites in one account



Remotely manage all of your data logger devices



Graph, review and analyse your data



Audits are easy with our event log system



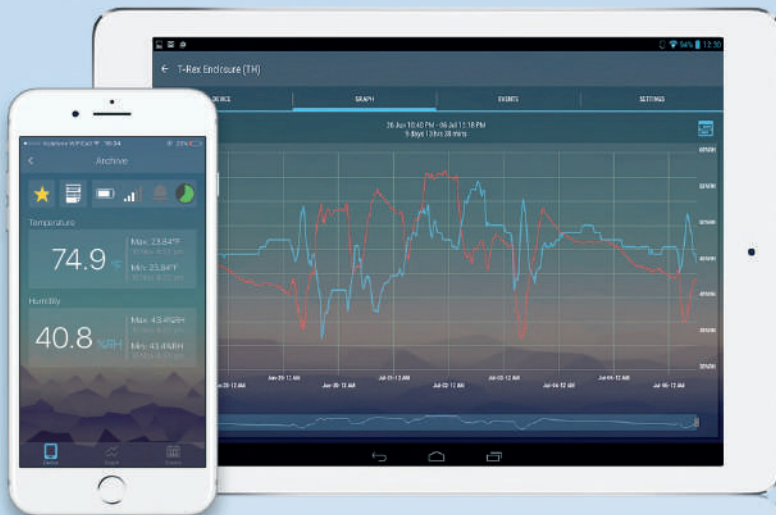
Secure Cloud storage



Configurable user profiles

## EasyLog Cloud App

Available for Android and Apple devices, the EasyLog Cloud app enables you to monitor and manage your wireless sensors on the go.



Access your vital data from any internet-enabled computer, tablet or mobile device with EasyLog Cloud. From single locations to worldwide operations, the system is perfectly scalable and can run through your existing wireless networks.

Critical events are notified to specific users in seconds via an alarm system that's easily tailored to your exact requirements.

Data is accessible 24/7 and powerful online tools make it simpler than ever to view, compare and analyse readings. An audit trail is automatically created that includes both system and data events.

Starter and Professional accounts are available, always flexible and with no locked-in contracts.



EasyLog

Your data, anytime, anywhere

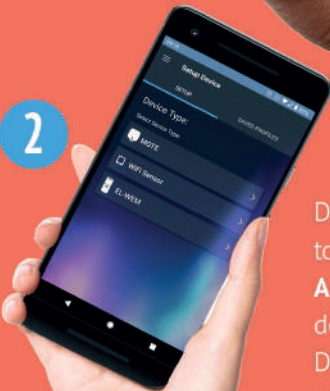
# EL-IOT-1

Ambient Temperature | Wifi Cloud-Connected Data Logger

## CONNECTING TO THE CLOUD

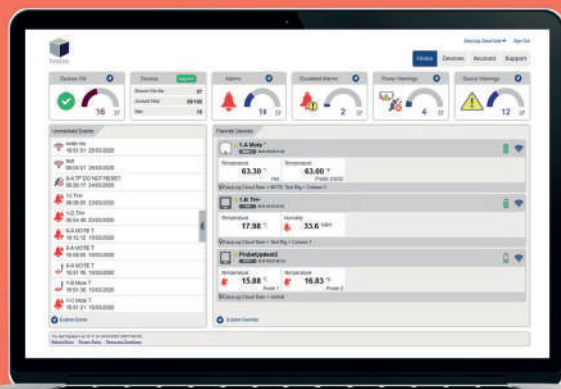


**1** Install the batteries and then press the main button to turn the device on.



**2**

Download and sign in to the **EasyLog Cloud App** on your mobile device. Select "Setup Device" and follow the on-screen instructions to add your EL-IOT.



**3**

You can now view the EL-IOT's data and change settings either in the EasyLog Cloud App or by visiting your account at: [www.easylogcloud.com](http://www.easylogcloud.com)

## STATUS INDICATORS

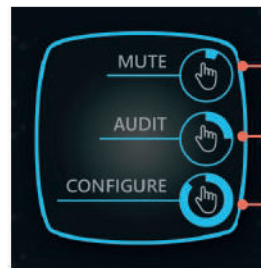
The EL-IOT has four Indicators and a sounder to clearly indicate its current status:

Indicator					
	Flashing	Flashing			Flashing
Status	Device in operation, no alarms or warnings	Alarm	Battery Low	WiFi Active	WiFi set up mode / not set up yet

The sounder is active whenever there is an alarm.

## BUTTON FUNCTIONS

The main button is used to control the device functions, some of which also create a record in an Event Log, which can be viewed on the Easylog Cloud website.



Short Press

Long Press

Press and Hold

Button Press			
	Short press < 1s	Long press > 1s-8s	Press and Hold > 8s
Function	Mutes the Alarm Sounder	Reset an alarm, creates an audit event in the record, forces data synchronisation with the Cloud	Activates Configuration mode to reconnect with the App



EasyLog

Your data, anytime, anywhere

# EL-IOT-1

Ambient Temperature | Wifi Cloud-Connected Data Logger

## INCLUDED IN THE BOX



**BAT 1V5 AA PK4**  
4 x AA 1.5V  
alkaline batteries



**EL-IOT WALL BRACKET**  
Wall mounting bracket

## ACCESSORIES



**BAT 1V5 AA PK4**  
4 x AA 1.5V  
alkaline batteries



**EL-MOTE-PSU**  
Power supply



**EL-IOT WALL BRACKET**  
Wall mounting bracket  
with magnets

## ALSO IN THE RANGE



**EL-IOT-TC**  
Wireless thermocouple  
temperature data logger



**EL-IOT-TH**  
Wireless temperature and  
humidity data logger



**EL-IOT-TH+**  
High accuracy temperature  
and humidity data logger

Visit [lascarelectronics.com/data-loggers](http://lascarelectronics.com/data-loggers)  
to see our full range of data loggers and  
measuring devices

## BATTERY INFORMATION

We recommend that you replace the batteries annually, or prior to logging critical data. Use only AA 1.5V alkaline batteries.

The logger does not lose its stored data readings when the batteries are discharged or replaced. However, the logging process will stop and will not resume until the batteries are replaced or a power supply is connected.

The batteries must be removed before using the mains power supply.

## CALIBRATION CERTIFICATES

Lascar offers a Traceable Calibration Certificate Service for temperature and humidity sensors. Using reference equipment which has been calibrated by a UKAS/NIST accredited laboratory and using apparatus traceable to national or international standards. For more information please see [www.lascarelectronics.com](http://www.lascarelectronics.com).

## TECHNICAL INFORMATION

Power Supply Voltage 9Vdc, 300mA

Operating Environment (battery power) -18 to +55°C, 5% to 85% RH, 75kPa to 106kPa

Operating Environment (power supply) -20 to +60°C, 5% to 85% RH, 75kPa to 106kPa

Transportation and Storage Environment -20 to +60°C, 5% to 85% RH, 75kPa to 106kPa

Net Weight 222g

Recommended Wall Fixing Screws 3.5 x 20mm, countersunk head, cross recessed, stainless steel