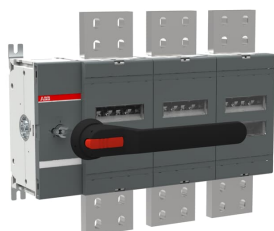


PRODUCT-DETAILS

OT4000E03P

OT4000E03P SWITCH-DISCONNECTOR



General Information

Extended Product Type	OT4000E03P
Product ID	1SCA124848R1001
EAN	6417019551876
Catalog Description	OT4000E03P SWITCH-DISCONNECTOR
Long Description	3-pole, front operated, base mounted switch-diconductor with black IP65 handle and shaft, terminal bolt kit included

Popular Downloads

Data Sheet, Technical Information	1SCC301020C0201
Instructions and Manuals	1SCC301082M0206

Dimensions

Product Net Width	514 mm
Product Net Height	410 mm
Product Net Depth / Length	146 mm
Product Net Weight	37 kg

Technical

Rated Operational Current AC-21B (I_e)	(380 ... 415 V) 3800 A
Rated Operational Current AC-22B (I_e)	(380 ... 415 V) 3800 A
Conventional Free-air Thermal Current (I_{th})	q = 40 °C 3800 A
Rated Impulse Withstand Voltage (U_{imp})	8 kV
Rated Insulation Voltage (U_i)	acc. to IEC/EN 60664-1 1000 V
Rated Operational Voltage	Main Circuit 1000 V
Rated Short-Circuit Making Capacity (I_{cm})	(690 V) 176 kA
Rated Short-time Withstand Current (I_{cw})	for 1 s 80 kA
Power Loss	at Rated Operating Conditions per Pole 130 W
Pollution Degree	3
Handle Color	Black
Handle Type	Handle and shaft included
Switches Operating Mechanism	Mechanism at the End of the Switch 03 (Left Side)
Distance Between Phases	Standard
Position of Line Terminals	Top In - Bottom Out Bottom In - Top Out
Operating Mode	Front operated
Standards	IEC 60947-3
Special Functions	No
Mounting Type	Base mounting
Number of Poles	3
Degree of Protection	Front IP00
Terminal Type	Lug terminals
Tightening Torque	acc. IEC 60947-1 50...75 N·m
Mechanical Durability	5000

Environmental

RoHS Status	Following EU Directive 2011/65/EU
-------------	-----------------------------------

Certificates and Declarations (Document Number)

Declaration of Conformity - CE	1SCC301211D2701
DNV GL Certificate	1SCC301184D0203
Instructions and Manuals	1SCC301082M0206
RoHS Information	1SCC301149D0203

Container Information

Package Level 1 Units	1 piece
Package Level 1 Width	435 mm
Package Level 1 Depth / Length	673 mm
Package Level 1 Height	215 mm
Package Level 1 Gross Weight	39.4 kg
Package Level 1 EAN	6417019551876

Classifications

Object Classification Code	Q
ETIM 5	EC000216 - Switch disconnecter
ETIM 6	EC000216 - Switch disconnecter
ETIM 7	EC000216 - Switch disconnecter
WEEE Category	4. Large Equipment (Any External Dimension More Than 50 cm)

Categories

Low Voltage Products and Systems → Switches → Switch Disconnectors

