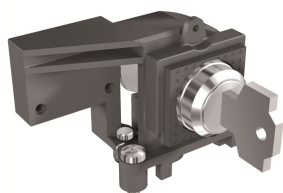

PRODUCT-DETAILS

KLC-S Key lock open N.20005 E2.2..E6.2

KLC-S Key lock open N.20005 E2.2..E6.2



General Information

Extended Product Type	KLC-S Key lock open N.20005 E2.2..E6.2
Product ID	1SDA073792R1
EAN	8015644777258
Catalog Description	KLC-S Key lock open N.20005 E2.2..E6.2
Long Description	KEY LOCK EQUAL N.20005 IN OPEN BETWEEN MORE C.BREAKERS E2.2...E6.2

Ordering

EAN	8015644777258
Minimum Order Quantity	1 piece
Customs Tariff Number	85389099

Dimensions

Product Net Weight	1 kg
--------------------	------

Container Information

Package Level 1 EAN	8015644777258
---------------------	---------------

Additional Information

Configuration Type	Loose or configurable
Product Main Type	Accessories for Emax 2
Product Name	Accessory
Product Type	Accessory
Standards	IEC
Suitable For	E2.2, E4.2, E6.2
Suitable for Product Class	SACE Emax 2

Certificates and Declarations (Document Number)

Data Sheet, Technical Information	1SDC200023D0204
Declaration of Conformity - CE	1SDL000165R0020 1SDL000165R0021 1SDL000165R0022
Instructions and Manuals	1SDH001000R0702

Classifications

ETIM 6	EC002498 - Accessories for low-voltage switch technology
ETIM 7	EC002498 - Accessories for low-voltage switch technology
Object Classification Code	Q
WEEE Category	5. Small Equipment (No External Dimension More Than 50 cm)

Categories

Low Voltage Products and Systems → Circuit Breakers → Air Circuit Breakers → Accessories for Emax 2

