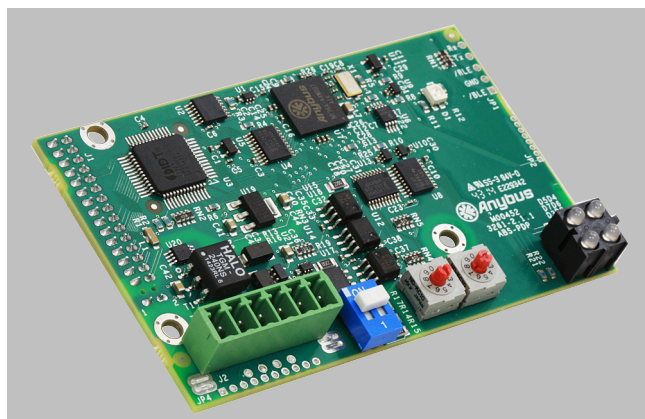


Overview



SmartLinX modules provide direct digital connection to popular industrial communications buses with true plug-and-play compatibility with products manufactured by Siemens.

Benefits

- Fast, easy installation
- Direct connection: no additional installation required
- Scalable application layer allows for optimized network bandwidth and memory requirements (for PROFIBUS DP-V0 and DeviceNet only)
- Modules available for PROFIBUS DP-V0, PROFIBUS DP-V1, PROFINET, DeviceNet, Modbus TCP/IP, and EtherNet/IP

Application

With the addition of a SmartLinX module, Siemens instruments can be connected to a variety of industrial communications networks. They're fast and easy to install, and can be added at any time. The module simply plugs into the socket on any SmartLinX enabled product. They require no secondary private buses or gateways and no separate wiring. There are no extra boxes to connect to your network so there's a minimum load on engineering and maintenance staff.

SmartLinX provides all data from the instrument, including measurement and status, and allows changes to operation parameters to be done over the bus or telemetry link. The user can select which data in the application layer to transfer over the bus. This selection saves bandwidth and memory and optimizes data throughput and speeds up the network, enabling you to connect more instruments to your network.

Selecting a communications module: PROFIBUS DP-V0 versus PROFIBUS DP-V1

The PROFIBUS DP-V1 card was added to MultiRanger 200 HMI and HydroRanger 200 HMI to provide acyclic communication and SIMATIC PDM support over PROFIBUS and PROFINET. For backward compatibility, the PROFIBUS DP-V0 card can also be used with MultiRanger 200 HMI and HydroRanger 200 HMI.

MultiRanger 100/200, HydroRanger 200, BW500/L, and SF500 are compatible only with the PROFIBUS DP-V0 module.

Selection and ordering data

Selection and Ordering data	Article No.
SmartLinX modules provide direct digital connection to popular industrial communications buses with true plug-and-play compatibility with products manufactured by Siemens.	
SmartLinX PROFIBUS DP-V0 module	7ML1830-1HR
SmartLinX PROFIBUS DP-V1 module	A5E35778741
SmartLinX DeviceNet module	7ML1830-1HT
SmartLinX PROFINET IO module ¹⁾	7ML1830-1PM
SmartLinX Modbus TCP/IP, EtherNet/IP module	7ML1830-1PN
Operating Instructions	
All literature is available to download for free, in a range of languages, at http://www.siemens.com/processinstrumentation/documentation	

¹⁾ SmartLinX PROFINET module is certified per standard V2.2.4.

Technical specifications

Module type	PROFIBUS DP-V0
Interface	RS 485 (PROFIBUS standard)
Transmission rate	All valid PROFIBUS DP rates from 9 600 Kbps ... 12 Mbps
Slave address	0 ... 99
Connection	Slave
SmartLinX module compatibility	<ul style="list-style-type: none"> • MultiRanger 200 HMI • MultiRanger 100/200 • HydroRanger 200 HMI • HydroRanger 200 • Milltronics BW500, BW500/L • Milltronics SF500

Module type	PROFIBUS DP-V1
Interface	RS 485 (PROFIBUS standard)
Transmission rate	All valid PROFIBUS DP rates from 9 600 Kbps ... 12 Mbps
Slave address	0 ... 99
Connection	Slave
SmartLinX module compatibility	<ul style="list-style-type: none"> • MultiRanger 200 HMI • HydroRanger 200 HMI

Module type	PROFINET IO module
Interface	RJ 45 female
Transmission rate	10/100 Mbits/s
Address	IP address through dip switches or via DCP or DHCP
Connection	Slave/server
SmartLinX module compatibility	<ul style="list-style-type: none"> • MultiRanger 200 HMI • HydroRanger 200 HMI • Milltronics BW500, BW500/L • Milltronics SF500

Level Measurement

Communications and displays

SmartLinX module

Technical specifications (continued)

Module type	Modbus TCP/IP, EtherNet/IP
Interface	RJ 45 female
Transmission rate	10/100 Mbits/s
Address	IP address through dip switches or via DCP or DHCP
Connection	Slave/server
SmartLinX module compatibility	<ul style="list-style-type: none"> • MultiRanger 200 HMI • HydroRanger 200 HMI • Milltronics BW500, BW500/L • Milltronics SF500

Module type	DeviceNet
Interface	DeviceNet physical layer
Transmission rate	125, 250, 500
MAC address	0 ... 63
Connection	Slave (group 2)
SmartLinX module compatibility	<ul style="list-style-type: none"> • MultiRanger 200 HMI • MultiRanger 100/200 • HydroRanger 200 HMI • HydroRanger 200 • Milltronics BW500, BW500/L • Milltronics SF500