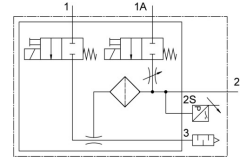
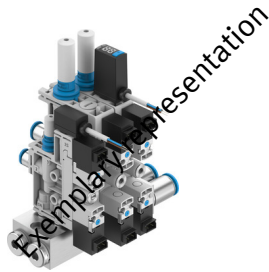


Vacuum generator OVTL

Part number: 8103599

FESTO



[PDF General operating condition](#)

Data sheet

Overall data sheet – Individual values depend upon your configuration.

Feature	Value
Nominal size, Laval nozzle	0.45 mm ... 0.95 mm
Grid dimension	10 mm ... 15 mm
Silencer design	Open
Number of device positions	2 ... 8
Mounting position	optional
Ejector characteristic	High suction rate High vacuum Standard
Grade of filtration	40 µm
Manual override	Non-detenting
Integrated function	Electric ejector pulse Flow control Pressure sensor Pressure transmitter Electric on-off valve Filter Open silencer
Design	For connection position on both sides For connection position on the side
Switching element function	N/C or N/O contact, switchable
Switching function	Freely programmable
Symbol	00995803 00995806 00995807 00995810
Valve function	Closed
Measurement method	Piezoresistive pressure sensor Piezoresistive pressure sensor with display
Display type	LED indicator 2-digit
Setting options	IO-Link® Teach-in Via display and keys
Operating pressure for max. suction flow rate	3 bar ... 6 bar
Operating pressure	0.2 MPa ... 0.7 MPa
Operating pressure	2 bar ... 7 bar
Operating pressure	29 psi ... 101.5 psi
Operating pressure for max. vacuum	3.8 bar ... 4.5 bar

Feature	Value
Max. vacuum	89 % ... 92 %
Nominal operating pressure	0.4 MPa
Nominal operating pressure	4 bar
Nominal operating pressure	58 psi
Max. suction flow rate against atmosphere	4 l/min ... 45 l/min
Air supply time at nominal operating pressure with ejector pulse	0.4 s ... 2 s
Analogue output	0 - 10 V 1 - 5 V
Operational voltage range DC	21.6 V ... 26.4 V
Duty cycle	100%
Switching output	PNP/NPN, switchable
Characteristic coil data	24 V DC: 1.28 W 24 V DC: 1.0 W
Approval	c UL us listed (OL)
CE mark (see declaration of conformity)	To EU EMC Directive
CE marking (see declaration of conformity)	To UK instructions for EMC
Operating medium	Compressed air to ISO 8573-1:2010 [7:4:4]
Note on operating and pilot medium	Lubricated operation not possible
Corrosion resistance class CRC	2 - Moderate corrosion stress
LABS (PWIS) conformity	VDMA24364-B1/B2-L
Media temperature	0 °C ... 50 °C
Sound pressure level at nominal operating pressure	52 dB(A) ... 68 dB(A)
Degree of protection	IP40
Ambient temperature	0 °C ... 50 °C
Product weight	118 g ... 890 g
Operating voltage range, DC sensor	10 V ... 30 V
Pressure measuring range	-0.1 MPa ... 0 MPa
Pressure measuring range	-1 bar ... 0 bar
Pressure measuring range	-14.5 psi ... 0 psi
Electrical connection input, function	Ejector pulse Vacuum generation
Electrical connection input, connection type	2x plug connector
Electrical connection input, connector system	Connection pattern H
Electrical connection input, number of connections/cores	2
Electrical connection input, connection pattern	00995626
Input electrical connection, mounting type	Snap-locking
Electrical connection output, function	Sensor
Electrical connection output, connection type	Cable
Electrical connection output, connector system	Open end
Electrical connection output, number of connections/cores	3
Cable characteristic	Suitable for energy chains
Cable diameter	2.9 mm
Cable diameter tolerance	± 0.1 mm
Cable length	2.5 m
Nominal cross section conductor	0.14 mm ²
Type of mounting	With through-hole
Pneumatic connection, port 1	Female thread G1/8 For tubing outside diameter of 6 mm For tubing outer diameter of 8 mm
Pneumatic connection, port 3	For tubing O.D. 4 mm For tubing O.D. 6 mm Open silencer
Vacuum connection	For tubing O.D. 3 mm For tubing outside diameter of 4 mm For tubing O.D. 6 mm

Feature	Value
Cable sheath colour	grey
Material connecting thread	POM
Note on materials	RoHS-compliant
Material sub-base	Wrought aluminium alloy
Material seals	NBR
Material receiver nozzle	POM
Material filter	POM
Material housing	PA-reinforced
Material hollow bolt	Wrought aluminium alloy
Material cable sheath	PVC
Material adjusting screw	Steel
Material silencer	PA-reinforced
Material screws	Steel
Material transmitter nozzle	Wrought aluminium alloy
Material fitting	Nickel-plated brass